

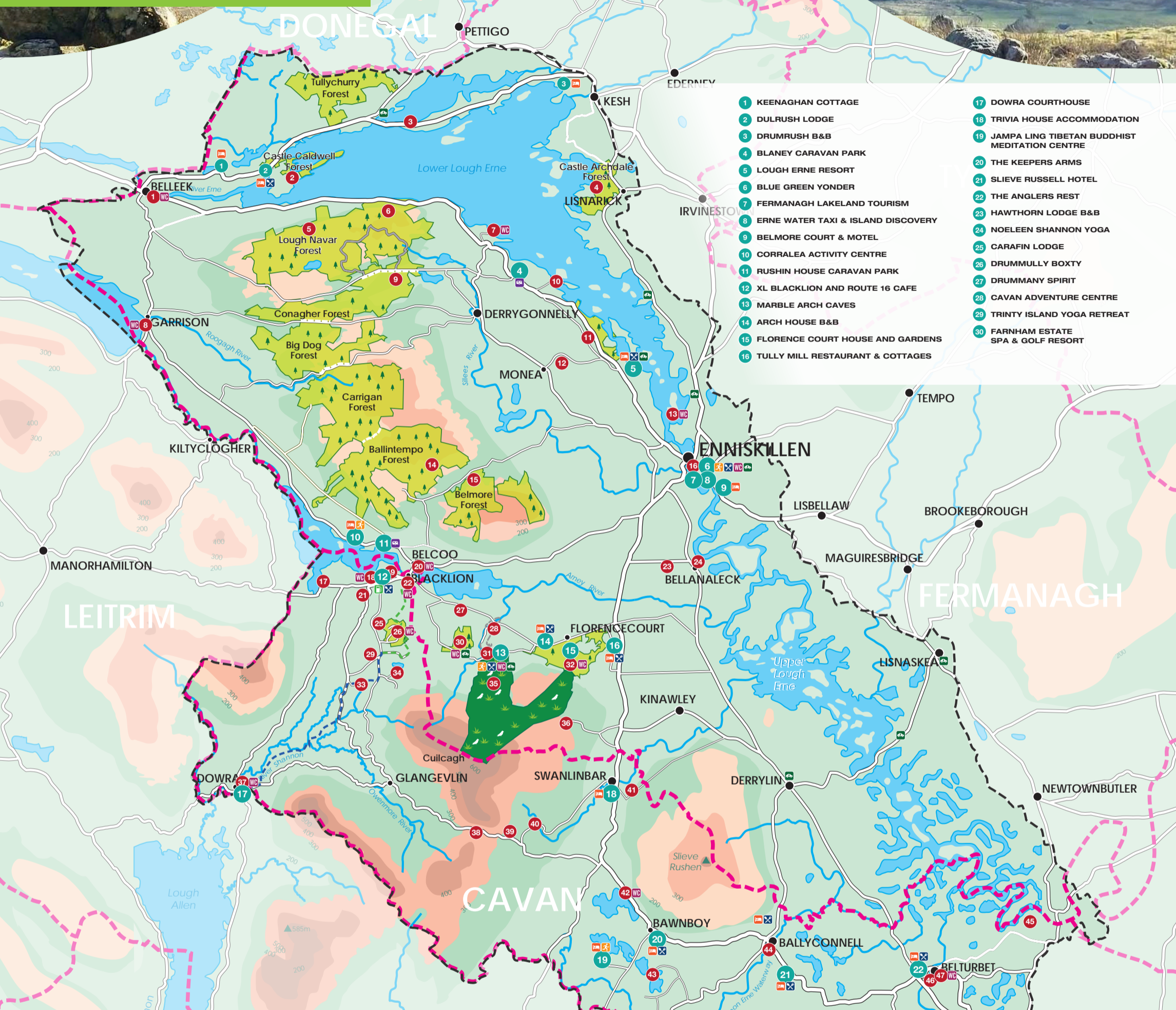
EXPERIENCES, IT'S IN OUR NATURE



CUILCAGH
LAKELANDS
GEOPARK



Cuilcagh Lakelands Geopark Business Guide A Regenerative Tourism Network



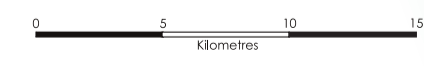
- 1 KEENAGHAN COTTAGE
- 2 DULRUSH LODGE
- 3 DRUMRUSH B&B
- 4 BLANEY CARAVAN PARK
- 5 LOUGH ERNE RESORT
- 6 BLUE GREEN YONDER
- 7 FERMANAGH LAKELAND TOURISM
- 8 ERNE WATER TAXI & ISLAND DISCOVERY
- 9 BELMORE COURT & MOTEL
- 10 CORRALEA ACTIVITY CENTRE
- 11 RUSHIN HOUSE CARAVAN PARK
- 12 XL BLACKLION AND ROUTE 16 CAFE
- 13 MARBLE ARCH CAVES
- 14 ARCH HOUSE B&B
- 15 FLORENCE COURT HOUSE AND GARDENS
- 16 TULLY MILL RESTAURANT & COTTAGES
- 17 DOWRA COURTHOUSE
- 18 TRIVIA HOUSE ACCOMMODATION
- 19 JAMPA LING TIBETAN BUDDHIST MEDITATION CENTRE
- 20 THE KEEPERS ARMS
- 21 SLIEVE RUSSELL HOTEL
- 22 THE ANGLERS REST
- 23 HAWTHORN LODGE B&B
- 24 NOELEEN SHANNON YOGA
- 25 CARAFIN LODGE
- 26 DRUMMULLY BOXTY
- 27 DRUMMANY SPIRIT
- 28 CAVAN ADVENTURE CENTRE
- 29 TRINITY ISLAND YOGA RETREAT
- 30 FARNHAM ESTATE SPA & GOLF RESORT

- 1 BELLEEK MARINA
- 2 CASTLE CALDWELL FOREST
- 3 BOA ISLAND JANUS FIGURE
- 4 CASTLE ARCHDALE FOREST
- 5 LOUGH NAVAR FOREST
- 6 MAGHO CLIFFS VIEWPOINT
- 7 TULLY CASTLE
- 8 GARRISON RECREATION AREA
- 9 CORREL GLEN NATIONAL NATURE RESERVE
- 10 INISHMACSAINT
- 11 CARRICKREAGH VIEWPOINT
- 12 MONEA CASTLE
- 13 DEVENISH ISLAND
- 14 BALLINTEMPO FOREST & AGHANAGLACK COURT TOMB
- 15 BELMORE FOREST & POLLNAGOLLUM CAVE
- 16 ENNISKILLEN CASTLE MUSEUMS
- 17 LOUGH MACNEAN VIEWPOINT
- 18 LOUGH MACNEAN AMENITY AREA
- 19 CATHAL BUI TRAIL
- 20 BELCOO COTTAGE LAWN
- 21 WHITEFATHERS CAVE
- 22 MARKET HOUSE
- 23 ARNEY RECREATION TRAILS
- 24 BELLANALECK QUARRY AND MARINA
- 25 CORNAGEE VIEWPOINT
- 26 CAVAN BURREN PARK
- 27 HANGING ROCK NATIONAL NATURE RESERVE
- 28 MARBLE ARCH NATIONAL NATURE RESERVE (CLADAGH GLEN)
- 29 MONEYGASHEL CASHEL
- 30 KILLYKEEGAN NATIONAL NATURE RESERVE
- 31 MARBLE ARCH CAVES
- 32 FLORENCECOURT FOREST
- 33 SHANNON POT
- 34 GARVAGH LOUGH
- 35 CUILCAGH MOUNTAIN PARK (CUILCAGH BOARDWALK TRAIL / 'STAIRWAY TO HEAVEN')
- 36 GORTALUGHANY VIEWPOINT
- 37 DOWRA COURTHOUSE
- 38 BELLAVALLEY GAP
- 39 ALTACHULLION VIEWPOINT
- 40 TULLYDERMOT FALLS
- 41 DRUMOD SULPHUR SPA

- 42 BRACKLEY LOUGH
- 43 ST. MOGUE'S ISLAND
- 44 BALLYCONNELL CANAL
- 45 CASTLE SAUNDERSON
- 46 TURBET ISLAND
- 47 RAILWAY CENTRE
- 48 DRUMLANE ABBEY
- 49 ANNAGH LOUGH
- 50 KILLESHANDRA TOWN LAKE
- 51 LOUGH OUGHTER LOUGHSHORE
- 52 KILLYKEEN FOREST PARK
- 53 KILMORE CATHEDRAL
- 54 GREEN LOUGH

- GEOPARK SITE
- BUSINESS NETWORK
- PUBLIC ROAD
- FOREST TRACK
- FOREST
- WETLAND / BOG
- MOUNTAINS
- LAKES
- RIVERS
- WATERFALL
- COUNTY BOUNDARY
- GEOPARK BOUNDARY
- TOWN / VILLAGE
- ACCOMMODATION
- CARAVAN PARK
- ACTIVITIES
- PETROL STATION
- FOOD
- TOILETS
- EV CHARGE POINT

*Seasonal opening hours may be in operation at some sites.



This product contains mapping data based upon Ordnance Survey of Northern Ireland data with the permission of the Controller of Her Majesty's Stationery Office Crown Copyright and database rights NIMA, OS and LA156. This product contains mapping and data based upon Ordnance Survey Ireland mapping data. Ordnance Survey Ireland Licence No.2010/01. ©CMA-Cavan County Council, Ordnance Survey Ireland/Government of Ireland.





Keenaghan Cottage

+44 (0)77 1901 2704
www.keenaghancottage.com

Currently the only 5 Star authentic thatched cottage on the island of Ireland offering a complimentary local produce welcome hamper, bicycles, BBQ, free parking, Wi-fi, Netflix and even wellies to get out and explore. A pet-friendly holiday cottage like no other. A multi award-winning luxury two-bedroom, two-restroom property in Co Fermanagh.



Dulrush Lodge

+44 (0)75 4041 8223
www.dulrushfishinglodge.co.uk

Nestled in the heart of the Fermanagh Lakelands, the lodge is in one of the best locations for our guests, whether they are looking for angling, walking or touring holidays. Here, you are guaranteed a very warm Irish welcome from your hosts, who will make sure that every detail of your stay is planned to perfection.



Drumrush B&B

+44 (0)79 7119 3095
www.drumrushbandb.co.uk

A boutique b&b on the lough shore in the heart of the beautiful Fermanagh Lakelands. A stay at Drumrush B&B is more than just a stay, it's an experience. Come rest in our comfortable, ensuite, nature, inspired bedrooms, relax in our sitting room and absorb the stunning lake views, eat a delicious breakfast made from locally sourced ingredients, experience our Irish hospitality and then go explore Cullcagh Lakelands Geopark.



Blaney Caravan Park

+44 (0)28 6864 1634
www.blaneycaravanpark.com

Blaney Caravan Park is a small family run holiday park situated on the Loughshore Road, 4 miles from Lough Navar Forest Drive, 3 miles from Carrickreagh Viewpoint and Tully Castle. Facilities are available for caravans/motorhomes and permanent holiday homes as well as self-catering shepherd huts.



Lough Erne Resort

+44 (0)28 6632 3230
www.lougherneresort.com

Lough Erne Resort, nestled in 600 acres of untouched countryside, provides a place to reconnect with nature, yourself, and loved ones. Guests enjoy lakeside views, luxurious accommodation, a Thai-inspired spa, championship golf, and three dining experiences, making it one of Northern Ireland's top resorts and Hotel of the Year 2024.



Blue Green Yonder

+44 (0)28 6648 0001
www.bluegreenyonder.com

Blue Green Yonder is a family, where worlds come together on our unique centre: Castle Island, Enniskillen. Our outdoor adventure centre full of passion provides inclusivity and accessibility to the water and the outdoors. We have lots of activities available such as archery, kayaking, canoeing, SUP, guided paddles throughout Lough Erne and hillwalking.



Fermanagh Lakeland Tourism

+44 (0)28 6634 6736
www.fermanaghlakelands.com

Dedicated to promoting the breathtaking landscapes, rich heritage, and attractions of the Fermanagh Lakelands, our mission is to attract visitors from across the globe, showcasing the natural beauty of our lakes, forests, and rolling countryside, while highlighting the region's rich cultural heritage and unique visitor experiences. From outdoor adventures like hiking and kayaking to exploring historical landmarks and enjoying local cuisine, we aim to inspire unforgettable experiences.



Erne Water Taxi & Island Discovery

+44 (0)77 1977 0588
www.ernewatertaxi.com

Create lifelong memories with a tour of Lough Erne's landscape, by exploring its hidden history and islands rich in folklore aboard luxurious boats. Private tours on an 8-seater Water Taxi or a 12-seater Electric Boat are available year-round, with public tours departing daily in July and August from Enniskillen Castle Museums Jetty to Devenish Island.



Belmore Court & Motel

+44 (0)28 6632 6633
www.motel.co.uk

Belmore Court & Motel, Enniskillen, offers modern, comfortable accommodation with a variety of room options. Guests enjoy free Wi-Fi, ample parking, and easy access to local attractions. Renowned for exceptional service and sustainably certified by Green Tourism, it's an ideal choice for eco-conscious business and leisure travellers seeking a welcoming, convenient, and affordable stay.



Corralea Activity Centre

+44 (0) 28 6638 6123
www.corralea.com

An outdoor activity experience provider offering a range of experiences which will allow you to immerse yourself into the natural beauty of the landscape of Cullcagh Lakelands Geopark. Canoe, SUP, archery, and e-bike hire, as well as private e-bike tours (Embrace a Giant Spirit Experience) are available. A Forest Eco Spa including wood fired sauna and hot tub is also available, offering breathtaking views – an outdoor experience like no other.



Rushin House Caravan Park

+44 (0)28 6638 6519
www.rushinhouse.com

Award winning 5-star park; family friendly, modern service block, children's playground, football pitch, outdoor gym, lakeside walk and fishing stand. Prices include electric hookup, hot showers and WiFi. 2022; AA Campsite of the Year Scotland & Northern Ireland. 2021 Best Small Site in UK. Trip Advisor Certificate of Excellence.



XL Blacklion and Route 16 Café

+353 (0)87 955 4964

Centre to all local border attractions including Cavan Burren Park and the Cullcagh Boardwalk Trail, XL Blacklion is open from 5.30am - 10pm daily. Offering a 7-day Grab and Go deli counter, Insomnia coffee station running all day, large selection of branded wines available in store and let's not forget about our Mullins ice-cream!



Marble Arch Caves

+44 (0)28 6632 1815
www.marblearchcaves.co.uk

Explore the Marble Arch Caves, located in the picturesque foothills of Cullcagh Mountain in Co Fermanagh. Open year-round, this stunning underground labyrinth features magnificent stalactites, flowing rivers, and winding passages. Guided cave tours reveal the caves' ancient formations and natural beauty, offering an unforgettable experience for adventurers and nature lovers alike.



Arch House B&B

+44 (0)28 6634 8452
www.archhouse.com

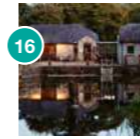
This family run sustainable beef and sheep farm guesthouse has been in business 39 years, providing locally sourced food in our restaurant for breakfast and evening meals. Situated beside the Marble Arch Caves, the Cullcagh Boardwalk Trail and Florence Court House and Gardens.



Florence Court House & Gardens

+44 (0)28 6634 8249
www.nationaltrust.org.uk

Florence Court House & Gardens boasts a beautiful 18th Century home with extensive parkland and woodland to explore. The recently restored kitchen garden and adjacent rose garden is a treat for any visitor. With tea rooms and facilities, it is a popular spot for locals and visitors.



Tully Mill Restaurant & Cottages

+44 (0)28 6634 9879
www.tullymill.com

Tully Mill Restaurant is nestled in the foothills of Benaughlin and Cullcagh Mountain in Co Fermanagh and are known for their warm, welcoming atmosphere and delicious dishes. Tully Mill are committed to providing an exceptional dining experience from the minute you walk through the door. Menu features seasonal, locally sourced ingredients, with gluten-free, vegan, and vegetarian options.



Dowra Courthouse

+353 (0)87247 3631

An iconic building within the village of Dowra, the Courthouse was originally built in 1932. The Courthouse now offers a tourism point, creative and culture centre with arts, exhibitions, creative workshops and local produced gifts on sale. A place for tourists and cyclists alike to stop by to recharge your e-bike, gain some local knowledge of walks and trails and see what Dowra Courthouse has to offer.



Trivia House Accommodation

+353 (0)87 090 3253
www.swanlinbar.ie

Trivia House is a community run Hostel offering budget accommodation for up to 26 guests. Offering 5 family rooms with bunk beds, free Wi-Fi and parking, 2 fully equipped kitchens for self-catering and children's playground. Only a 15-minute drive from the Cullcagh Boardwalk Trail and the Marble Arch Caves.



Jampa Ling Tibetan Buddhist Meditation Centre

+353 (0)49 952 3448
www.jampaling.org

Situated on a beautiful nineteenth-century estate close to the spectacular Cullcagh Mountain. Visitors can avail of meditation training and practices, or enjoy the peaceful gardens, woods, lakes and surroundings – a relaxing environment open to everyone of all faiths and none. Accommodation available all year round.



The Keepers Arms

+353 (0)49 952 3318 / +353 (0)87 411 5718
www.keepersarms.com

A traditional family-run Irish country pub, genuine Irish welcome, warmth and true hospitality. A perfect base for exploring Cullcagh Lakelands Geopark. Offering 9 spacious, comfortable guest rooms, separate from the pub, with private guest car park and an extensive breakfast menu using locally sourced produce and delicious home-cooked meals available.



Slieve Russell Hotel

+353 (0)49 952 6444
www.slieverussell.ie

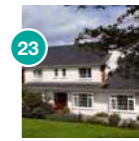
Set in 300 acres, including 50 acres of lakes, the resort offers a unique experience in relaxation and leisure. Facilities include 224 bedrooms, spa, wedding and conference facilities along with a leisure centre and pool. Enhancing the facilities is the 18-hole PGA National championship golf course, academy course and driving range.



The Anglers Rest

+353 (0)49 952 6391

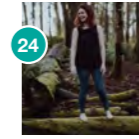
Whether guests are looking for outdoor action and adventure, fine food, angling and water sports or the more laid-back delights of the local countryside and historical sites, The Anglers Rest is the perfect place to stay and/or eat when visiting Cullcagh Lakelands Geopark.



Hawthorn Lodge B&B

+353 (0)49 952 2371
www.hawthornlodgebandbelturbet.com

Hawthorn Lodge B&B – Belturbet, is a multi award-winning, four-star Irish Tourist Board Approved, family-run business. Located in Monea, Milltown, Belturbet, Co Cavan, H14 DX00. Guest bedrooms have private en-suites, with tea & coffee making facilities, free Wi-Fi, flat screen TV, and hairdryer.



Noeleen Shannon Yoga

+353 (0)87 912 9051
www.instagram.com/noeleenshannonyoga_reiki

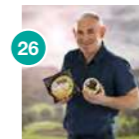
Noeleen's yoga practice and offerings have been inspired by mother nature and the beautiful landscapes of Cullcagh Lakelands Geopark. Retreat from the world to the tranquility of the lakes, drumlins, forests and mountains to reconnect with nature and your inner peace and calm.



Carafin Lodge

+353 (0)86 881 0014
www.carafinlodge.ie

Nestled in the rolling countryside of Cavan, situated on a hilltop amongst the maze of rivers and lakes that make up Lough Oughter, lies Carafin Lodge. A perfect destination for the serious pike/course angler to someone out for a day's fun on the water.



Drummully Boxty

+353 (0)87 678 5381
www.drummully.com

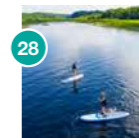
Drummully Boxty is supplied fresh daily to local shops, restaurants and butchers in Cavan and surrounding counties and across the country. Their traditional dumplings and pan boxty are gluten free, dairy free, preservative free and made using the finest Irish potatoes and have won gold and silver in Blas na hEireann Irish Food Awards.



Drummany Spirit

+353 (0)87 195 7581
www.drummanyspirit.com

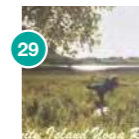
Drummany Spirit is a certified organic farm event space that hosts Celtic spiritual ceremonies, retreats, wheel of the year festivals, workshops on cultural conservation and sustainability. Rooted in the heart of the sacred land in Drumlane beside Clough Oughter, Drumlane Abbey and 15 minutes from Cavan town. We support people in sobriety and addiction recovery. Connecting YOU with Nature's Spirit.



Cavan Adventure Centre

+353 (0)49 489 3630
www.cavanadventure.ie

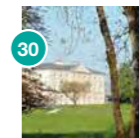
Cavan Adventure Centre is an outdoor adventure facility that offers a wide range of activities and experiences that promote outdoor fun, physical activity, eco-based learning and overall wellbeing. Take your pick from kayaking, biking, archery, orienteering, bushcraft, forest therapy and much more! All in the midst of an unspoiled natural landscape.



Trinity Island Yoga Retreats

+353 (0)87 962 2674
www.facebook.com/trinityislandyogaretreat

Set on the tranquil Trinity Island on the shores of the Lough Oughter Network, our yoga retreats are designed to bring relaxation, restoration and rejuvenation for our clients. Combining yoga, breath work, meditation, sound healing and forest mindfulness, our retreats run over the summer months and are suitable for all levels of physical abilities.



Farnham Estate Spa & Golf Resort

+353 (0)49 437 7700
www.farnhamestate.ie

Set on a beautiful 1,300-acre country estate on the outskirts of Cavan Town, Farnham Estate is one of Ireland's most popular spa and golf destinations with a superb reputation for being a genuine 'retreat to nature'. With 158 bedrooms and 20 luxurious resort houses, indoor/outdoor pool, spa and Geoff Howes golf course.

Contact Information

Cullcagh Lakelands Geopark,
MacNea Resource Centre,
Blacklion,
Co Cavan,
Ireland,
F91 NWW7

T: +353 (0) 719 853 692
E: info@cullcaghlakelands.org

For more information on upcoming activities latest news, additional Geopark sites and much more please visit:
www.cullcaghlakelands.org
www.cavanburrenpark.ie
www.marblearchcaves.co.uk
www.thisiscavan.ie
www.fermanaghlakelands.com

f i n t @cullcaghlakelands



The businesses featured here are accredited Geopark Business Sustainability Network members who have completed our Business Sustainability Training Programme. This programme places an emphasis on the importance of regenerative tourism and allows businesses located within Cullcagh Lakelands Geopark to come together to build a sustainable tourism offering for visitors to the area.



To find out more information on any of these businesses scan the QR code