

Drumrush B&B



Know Before You Go Guide



Drumrush B&B is a special place to stay on the edge of Lower Lough Erne in Co Fermanagh. This guide will help you get ready for your stay.



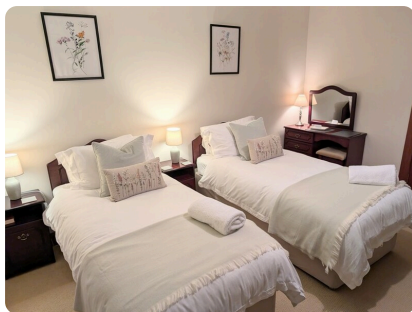
To book your stay at Drumrush B&B you can either book online at <https://www.drumrushbandb.co.uk/>, email drumrushbandb@gmail.com or call +44(0)7971193095.



There is plenty of private parking at the house. The entrance has a gentle slope, making it easy to access.



The ground floor is wheelchair accessible as it step free with wide corridors.



There are 5 ensuite bedrooms. One bedroom is on the ground floor and is wheelchair accessible.



You can make tea and coffee in your room.



The bathroom on the ground floor, in Room 2 is a wet room. There are grab rails and a fixed shower seat. You can ask for a raised toilet seat and alternative shower chair if needed.



The breakfast room is wheelchair accessible.



You can enjoy beautiful views of Lower Lough Erne from the lounge. It is also wheelchair accessible and very comfortable.



There is free Wi-fi throughout the B&B.



You can enjoy an outdoor hot tub, a cold tub, and an infra-red sauna.



There is also a canoe for fun on the water.



Sensory Tools in Nature



We have 4 acres of green land around Drumrush B&B. There is a buttercup meadow, a small stream, and a short woodchip woodland trail to the lough shore.



Stop and listen to the sounds around you. Hear the birds singing, and the wind moving through the trees.



We have nesting boxes, bat boxes and bug hotels. If you stay still and listen carefully you might see some wildlife.



Look at the trees and clouds in the sky. Can you spot shapes? It is calming to notice what's around you.



Put your feet in the grass. Feel the leaves. You can use these textures to stim or feel calm.



Watch how the plants and trees move in the wind. Sway like the trees. Moving your body can feel fun and help you feel good.



Take a deep breath and notice the different scents. Smell the flowers, grass, and trees. Smelling nature can be relaxing and make you feel happy.



Eco Friendly



The B&B is a Member of Cuilcagh Lakelands Geopark's Business Sustainability Network.



We use solar panels which change sunlight into electricity.



Our sustainable practices include water and energy conservation, locally sourced produce and recycling of waste materials.



About Geoparks



Drumrush B&B is located in Cuilcagh Lakelands Geopark.



What is a Geopark? A Geopark is a protected area that showcases important natural features like rocks, fossils, caves, and landscapes.



Geoparks also celebrate local culture, wildlife, and traditions. They involve communities to preserve nature.



Things To Do Nearby in Cuilcagh Lakelands Geopark



Castle Archdale Forest – A forest with 2 scenic walking trails on the shores of Lower Lough Erne and the remains of Castle Archdale.



Castle Caldwell Forest – An ancient woodland forest with 3 scenic walking trails on the shores of Lower Lough Erne.



Magho Cliffs – A hiking trail up to Lough Navar Forest, offering stunning views over Lower Lough Erne.

Photosymbols®

Personal Licence 23989507654008

Cuilcagh Lakelands Geopark's Regenerative Tourism Business Network is continuously working on improving our accessibility. We welcome your feedback on our facilities and our Know Before You Go Guides. You can send feedback to info@cuilcaghlakelands.org.