



# Hawthorn Lodge B&B - Belturbet



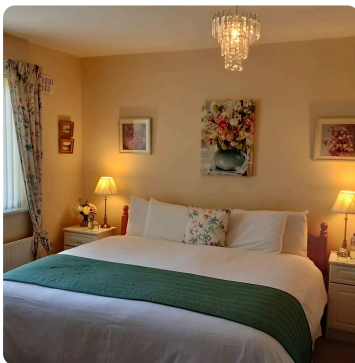
Know Before You Go Guide



Hawthorn Lodge B&B is run by Mother and Daughter in Milltown, Co Cavan, in the quiet countryside. This guide will help you get ready for your stay.



You can book your stay at Hawthorn Lodge B&B online at Booking.com or other booking platforms. For any queries, get in touch at [www.hawthornlodgebandbbelturbet.com](http://www.hawthornlodgebandbbelturbet.com) or call +353(0)499522371.



We have one small step at the entrance to the B&B. All bedrooms are located on the first floor and are not suitable for wheelchair users.



We use special pillows and duvets that are good for people with allergies. You will be asked about your dietary requirements. We offer dairy free, gluten free, vegetarian, and vegan menus.



## Sensory Tools in Nature



Hawthorn Lodge B&B is surrounded by nature in a quiet countryside. The perfect place to relax or explore.



We have bird tables and bird feeders. Stop and listen to the sounds around you. Hear the birds singing, and the wind moving through the trees.



We have Bug Hotels, polytunnels, and a big garden for guests to freely walk around. Take a deep breath and notice the different scents. Smell the flowers, grass, and trees. Smelling nature can be relaxing and make you feel happy.



We have two ornamental ponds with fountains, so that guests can enjoy the gentle sound of the water and a wildlife pond.



Look at the trees and clouds in the sky. Can you spot shapes? It is calming to notice what's around you.



Put your feet in the grass. Feel the leaves. You can use these textures to stim or feel calm.



Watch how the plants and trees move in the wind. Sway like the trees. Moving your body can feel fun and help you feel good.



## Eco Friendly



The B&B is a Member of Cuilcagh Lakelands Geopark's Business Sustainability Network.



We grow our own food without using pesticides and support local food producers. We use methods like composting to make sure nothing goes to waste.



We encourage guests to help save energy by reusing towels and turning off lights. We have stopped using single-use plastic and use refillable bottles for shampoo and soap.



## About Geoparks



Hawthorn Lodge B&B is located in Cuilcagh Lakelands Geopark.



**What is a Geopark?** A Geopark is a protected area that showcases important natural features like rocks, fossils, caves, and landscapes.



Geoparks also celebrate local culture, wildlife, and traditions. They involve communities to preserve nature.



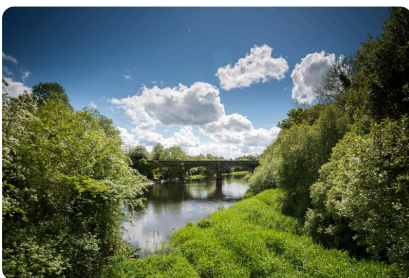
## Things To Do Nearby in Cuilcagh Lakelands Geopark



Drumlane Abbey - A historic monastic site with ancient round tower and scenic lakeside setting.



Clough Oughter - A ruined castle on an island surrounded by tranquil Lough Oughter waters.



Turbet Island - A scenic walking trail along the River Erne with a Motte and Bailey.

**Photosymbols**<sup>®</sup>

Personal Licence 23989507654008

Cuilcagh Lakelands Geopark's Regenerative Tourism Business Network is continuously working on improving our accessibility. We welcome your feedback on our facilities and our Know Before You Go Guides. You can send feedback to [info@cuilcaghlakelands.org](mailto:info@cuilcaghlakelands.org).