

Killyhevlin Lakeside Hotel & Lodges



Know Before You Go Guide



The Killyhevlin Hotel is located on the shores of Lough Erne in Enniskillen, Co. Fermanagh. Their Lakeside Studios and Lodges are on this site too. This guide will help you get ready for your stay.



To book a stay at the Killyhevlin Hotel you can either book online at <https://www.killyhevlin.com/>, email info@killyhevlin.com or call +44(0)2866323481.



There is free car parking at the hotel with accessible parking at the front. You can get to Enniskillen via bus or taxi.



There are ramps into the building. The main door is automatic and wide. Bedroom doors are manual. Staff can help with luggage if needed.



When you enter, you will see the Reception. Staff can help you find your way. There are lifts and stairs to reach different areas like the Health Club and Spa.



Guests must check in at the main reception to get their keys. There is a path from the hotel to the Lodges.



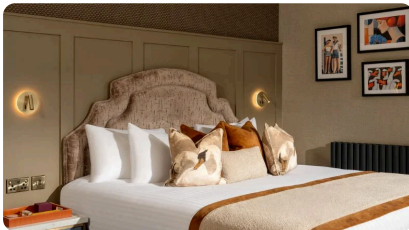
The playground and padel tennis court are for everyone to enjoy.



The hotel has accessible bedrooms with wide doorways and roll-in showers. Bathrooms have grab bars and raised toilet seats. We can provide a shower stool if needed.



There are accessible bathrooms in the hotel with grab bars and emergency pull cords. These are near the reception, restaurant, and spa.



Some bedrooms are on the ground floor but not all are adapted for mobility aids. You can request a room with mobility aids when booking.



The Lakeside Bar, Kove Restaurant, Devenish Room, Lisgoole Suite and Riverside Room are all accessible on the ground floor. Paths and outdoor areas are accessible but some are on a slope.



Assistance animals are welcome. Other pets can stay for a fee. Pets must be on a lead and are not allowed in some areas.



There is a hearing loop in the Lisgoole Suite. This helps people who use hearing aids.



Our staff are happy to assist you. Our catering and food service staff are also trained in allergen management and dietary safety.



Fire alarm – if you hear this, leave through a fire exit.



Welcome

Let the hotel know if you have special requests to make your stay better. We try hard to make everyone feel welcome. We hope you have a happy stay in Co. Fermanagh.



Sensory Tools in Nature



The Killyhevlin Hotel is surrounded by nature and overlooks the tranquil Lower Lough Erne. The perfect place to relax or explore.



The hotel has scenic walks with views of Lough Erne. Children can enjoy the Kuddles Killy Challenge. An interactive activity to keep children entertained while exploring the lakeside setting.



Opposite the hotel is a protected bird reserve where Swans and other waterfowl can be seen nesting in their habitat. Stop and listen to the sounds around you. Hear the birds singing, and the wind moving through the trees.



There are bird houses and bat boxes located in various spots on site. See if you can spot any wildlife.



Look at the trees and clouds in the sky. Can you spot shapes? It is calming to notice what's around you.



Put your feet in the grass. Feel the leaves. You can use these textures to stim or feel calm.



Watch how the plants and trees move in the wind. Sway like the trees. Moving your body can feel fun and help you feel good.



Eco Friendly



The Hotel is a Member of Cuilcagh Lakelands Geopark's Business Sustainability Network.



We use refillable bathroom amenities to eliminate single-use plastics and have a towel reuse option to help conserve water and energy.



We use energy-saving key card systems in guest bedrooms. Electric vehicle charging stations are available for guest use.



About Geoparks



The Killyhevlin Hotel is located in Cuilcagh Lakelands Geopark.



What is a Geopark? A Geopark is a protected area that showcases important natural features like rocks, fossils, caves, and landscapes.



Geoparks also celebrate local culture, wildlife, and traditions. They involve communities to preserve nature.



Things To Do Nearby in Cuilcagh Lakelands Geopark



Cuilcagh Boardwalk – A hiking trail. People like to call it the 'Stairway to Heaven'.



Marble Arch Caves – An underground cave system with rivers and rock formations. Guided tours are available.



Enniskillen Castle – A historic riverside fortress housing museums showcasing local heritage and military history.

Photosymbols[®]

Personal Licence 23989507654008

Cuilcagh Lakelands Geopark's Regenerative Tourism Business Network is continuously working on improving our accessibility. We welcome your feedback on our facilities and our Know Before You Go Guides. You can send feedback to info@cuilcaghlakelands.org.