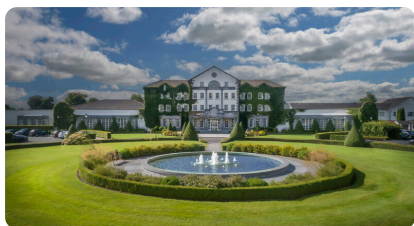


Slieve Russell Hotel



Know Before You Go Guide



The Slieve Russell Hotel is located in Ballyconnell, Co Cavan. We are proud to be Ireland's first Dementia-Friendly Hotel. This guide will help you get ready for your stay.



To book a stay at the Slieve Russell Hotel you can either book online at <https://www.slieverussell.ie/>, email enquiries@slieverussell.ie or call +353499526444.



Our team is friendly and ready to help you plan your visit and when you arrive. We want your stay to be comfortable and fun. Reception offers 24 hour assistance.



Welcome

Familiarisation visits can be arranged in advance to help you become comfortable with the hotel.



You can reach us by car. We have a private car park with 18 accessible spaces. We also have a set-down area at the main entrance.



Leydon's Bus Service offers a wheelchair accessible route from Cavan Station to our hotel. Floods Taxi and ATDS Taxi are available from Cavan Town. County Cabs is available from Enniskillen.



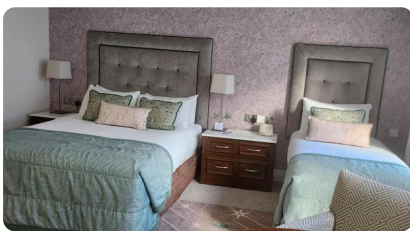
The main entrance has ramps. The Country Club entrance is flat and step-free. Both have push button doors.



Reception is located on the 6th floor, at the entrance of the hotel. Our Porter and Concierge Team can provide assistance throughout the hotel.



Kells Bar, Gift Shop, Country Club, Conall Cearnach Restaurant, Setanta Restaurant, Games Room, Conference Rooms, Bedrooms 601–649 and Golf Club are also on this level.



Lifts are near Reception. Some bedrooms are far from Reception. If walking longer distances is difficult, we recommend reserving a Deluxe Twin Bedroom, as these are close to Reception.



Rooms 601 and 603 are designed for wheelchair users with accessible features. We also have Dementia-Friendly bedrooms.



Guide and assistance dogs are welcome. We provide a water bowl in your room.



Accessible toilets are in all public areas. Larger bathrooms include the Kells Bar Toilets and Conall Cearnach Restaurant Toilets.



Sensory equipment is available at Reception. We have quiet spaces and a Sensory Room on the 5th floor.



We have three restaurants. The Summit Restaurant is accessible via the lift in the Club House. The seating layout is open plan, and all areas are accessible. Quieter dining options are available.



The Country Club has accessible showers and toilets, low level lockers and access to the pool deck. The sauna, steam room, pool, and jacuzzi are accessed by steps.



The Ciúin Spa has accessible entry on the 5th floor. Accessible changing rooms and lockers and treatment rooms are available.



Enjoy the Rushen Brook Garden with brick pathways and covered seating.



Some areas of Adventure Golf are not accessible. We also have a tennis court at the hotel.



Fire bells are tested every Monday at 11am and on a Tuesday following a Bank Holiday.



Sensory Tools in Nature



The Slieve Russell Hotel is surrounded by nature. The perfect place to relax or explore.



Cranaghan Way features a smooth 2.5km tarmacadam pathway. Benches are positioned along the way, offering opportunities to enjoy the scenery. Look out for the fairy doors along the path.



Stop and listen to the sounds around you. Hear the birds singing, and the wind moving through the trees.



Look at the trees and clouds in the sky. Can you spot shapes? It is calming to notice what's around you.



Put your feet in the grass. Feel the leaves. You can use these textures to stim or feel calm.



Watch how the plants and trees move in the wind. Sway like the trees. Moving your body can feel fun and help you feel good.



Take a deep breath and notice the different scents. Smell the flowers, grass, and trees. Smelling nature can be relaxing and make you feel happy.



Eco Friendly



The Hotel is a Member of Cuilcagh Lakelands Geopark's Business Sustainability Network.



We aim to cut our energy useage, conserve water, and minimise waste across operations. We reduce, reuse, and recycle where possible.



The Hotel sits on 300 acres of grounds and lakes where we actively promote nature conservation. We have a bug hotel and butterfly garden to support local wildlife.



About Geoparks



The Slieve Russell Hotel is located in Cuilcagh Lakelands Geopark.



What is a Geopark? A Geopark is a protected area that showcases important natural features like rocks, fossils, caves, and landscapes.



Geoparks also celebrate local culture, wildlife, and traditions. They involve communities to preserve nature.



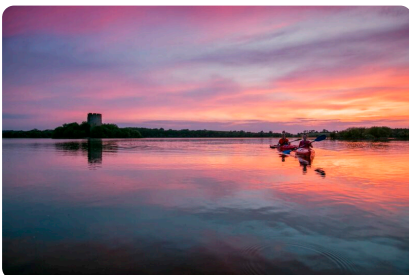
Things To Do Nearby in Cuilcagh Lakelands Geopark



Ballyconnell Canal Trail – A peaceful waterside trail, with wildlife, and relaxing scenic view.



Cuilcagh Boardwalk – A hiking trail. People like to call it the 'Stairway to Heaven'.



Clough Oughter – A ruined castle on an island surrounded by tranquil Lough Oughter waters.

Photosymbols[®]

Personal Licence 23989507654008

Cuilcagh Lakelands Geopark's Regenerative Tourism Business Network is continuously working on improving our accessibility. We welcome your feedback on our facilities and our Know Before You Go Guides. You can send feedback to info@cuilcaghlakelands.org.