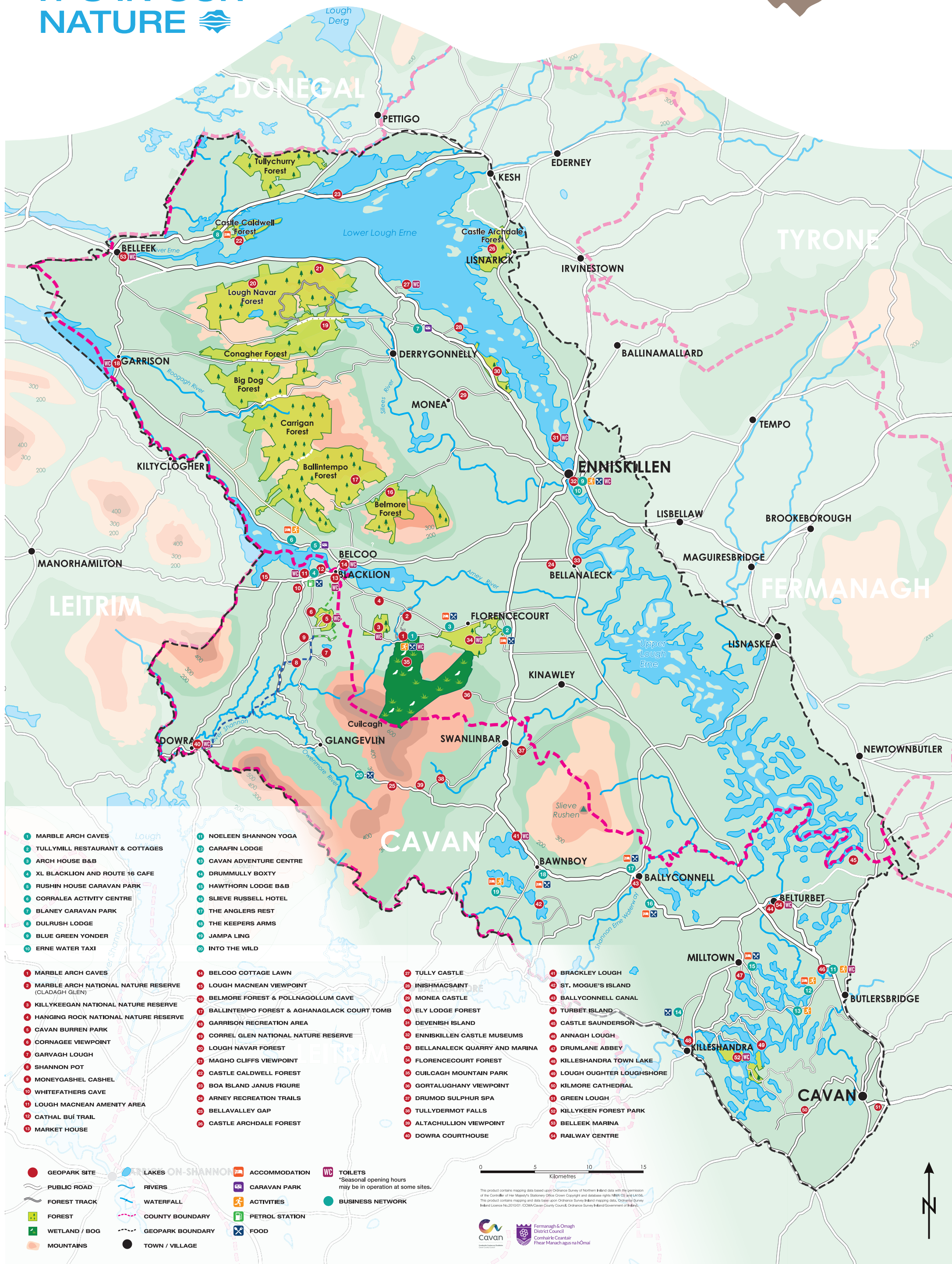




**CUILCAGH  
LAKELANDS  
GEOPARK**



The businesses featured here are accredited Geopark Sustainable Business members who have completed our Business Sustainability Programme. This programme places an emphasis on the importance of regenerative tourism and allows businesses located within Cuilcagh Lakelands Geopark to come together to build a sustainable tourism offering for visitors to the area.

#### MARBLE ARCH CAVES

1 1



Discover magical moments in one of Europe's finest show caves. The Marble Arch Caves pay homage to a fascinating world of subterranean rivers, winding passages, lofty chambers, and an array of delicate cave formations.

On a guided cave tour our carefully constructed paths enable you to comfortably traverse the show cave whilst discrete lighting displays the cave features and delicate cave formations to their optimum. Our tour takes approximately 60-75 minutes, as you journey through 1 mile/1.5km of majestic underground passages.

The Marble Arch Caves are open year-round, for information on opening times, events, planning your visit or to make an online booking visit our website. Our Customer Service Team are available daily from 9:00am, telephone +44(0)28 66 321815 or email [mac@fermanaghmagh.com](mailto:mac@fermanaghmagh.com). Your adventure starts here!

#### TULLY MILL RESTAURANT & COTTAGES

2



Tully Mill is a beautiful, converted flour mill, set in the picturesque surroundings of the Florence Court estate. Both the staff and the food at Tully Mill are award winning, with visitors sure of a warm welcome, an atmospheric setting and food which showcases the best ingredients that Fermanagh has to offer. This focus on locally sourced has made sustainability at the heart of all we do, and we are proud to be part of the Geopark Sustainability Business Network.

We offer a range of dining options, from tapas to Sunday lunch, and can cater for everything from romantic, intimate dining to large scale celebrations. Visit our website or call our team today to make a booking or to speak to us regarding any special occasions that you'd like to host here.

#### XL BLACKLION & ROUTE 16 CAFE

4



XL Blacklion & Route 16 Cafe is nestled in the picturesque village of Blacklion and within Cuilcagh Lakelands Geopark offering customers a warm friendly welcome. From Seattle's Best coffee, the I Scream For Ice Cream counter, a large selection of wines, freshly prepared hot and cold food, and a wide selection of groceries you are sure to find something. Built on a sustainable concept we strive to reduce our carbon footprint to not only look after our customers but also our beautiful environment.

#### CAVAN BURREN PARK

5



Cavan Burren Park is a unique landscape of geological and archaeological features in an open natural setting - a truly prehistoric park. Whether it's Cavan Burren's wide-open landscapes, fascinating Interpretative Centre, the perfectly preserved glacial erratics, spectacular megaliths, bog-bridge walking trails or limestone pavement, a visit to Cavan Burren Park is an opportunity to experience a vast yet accessible world of natural and built heritage.

Take time to experience the Interpretative Centre and four walking trails including one multi-accessible trail all which guide the visitor through some of Cavan Burren Park's most intriguing archaeological and geological features.

#### CORRALEA ACTIVITY CENTRE

6



We are an Outdoor Activity Experience Provider offering a range of outdoor experiences which will allow you to immerse yourself into the natural beauty of the landscape of Cuilcagh Lakelands Geopark.

We offer:

- Canoe and SUP hire for the lake, selfguided paddle allowing you to island hop and glide across unspoilt waters of Lough MacNea.
- Ebike hire from the Centre. You can take yourself off the beaten track, explore old megalithic tombs, caves and hidden thatched pub all located in the centre of the Geopark.
- Forest eco spa onsite at Corralea. An outdoor spa experience like no other. Breathtaking views, exclusive use of our wood fired sauna and hot tub. This is one for the Bucket list!
- Private outdoor activity sessions available on request. Archery, Climbing and Mountainbiking.



#### BLANEY CARAVAN PARK

7



+44 (0)2868641634

Blaney Caravan Park is a small family run holiday park situated on the Loughshore Road, 4 miles from Lough Navar Forest Drive, 3 miles from Ely Lodge Forest and Tully Castle. Facilities are available for caravans/motorhomes and permanent holiday homes as well as self-catering shepherd huts.



#### BLUE GREEN YONDER

9



+44 (0)2866480001

Blue Green Yonder is a family, where worlds come together on our unique centre: Castle Island, Enniskillen. We are a family, full of friends creating a warm and welcoming world for others to enjoy, the life on the water and the outdoors that we love and care for. Our outdoor adventure centre full of passion provides inclusivity and accessibility to the water and the outdoors. We have lots of activities available such as archery, kayaking, canoeing, SUP, guided paddles throughout Lough Erne and hillwalking. We also cater for groups, activities schools, scouts, youth groups and birthdays. Castle Island is also home to its very own coffee shop and gift shop.

#### ERNE WATER TAXI & ISLAND DISCOVERY

10



+44 (0)7719770588



We want you to create memories of a lifetime with us in one of the most beautiful locations in the world, Lough Erne. Relax on board our luxurious boats and explore a landscape full of hidden history and islands with rich folklore. We provide Water Taxi and Tour Guiding services on Lough Erne and two boats are available for private tours all year around, our 8 seater Water Taxi and 12 seater, Fully Electric, Island Discovery. Both boats are covered allowing you to travel in all weathers.

We also run public tours at weekends in June and every day in July and August from Enniskillen Castle Museums Jetty. The experience we provide gives our visitors the opportunity to connect with nature and enjoy an outdoor adventure off the beaten track. Our personal service inspires our visitors to imagine Lough Erne's ancient landscape through the stories our passionate guides tell.



#### NOELEEN SHANNON YOGA

11



+353 (0)879129051

Offering unique experiences, retreats, and classes in the wilds of West Cavan, Fermanagh Lakelands and countryside. These beautiful offerings help you reconnect to mother nature, the elements, seasons and back to your true nature.

#### CAVAN ADVENTURE CENTRE

13



+353 (0)494893630

Established since 2008, Cavan Adventure Centre supplies numerous land and water based activities suitable for all ages - team building activities, school tours, summer camps and specialised day tours. Experience action packed adventure in one of Ireland's most spectacular landscapes. From various naturally beautiful kayak and bike trails to a splashastic Water Park, Cavan Adventure Centre is the beating heart of unforgettable outdoor fun.

Why not explore Clough Oughter Castle on this Special Area of Conservation with our local expert guide or rejuvenate with our outdoor yoga in the woodlands? Our aim is to offer you a most memorable experience in a relaxed and natural environment.



#### HAWTHORN LODGE B&B

15



+353 (0)499522371

Hawthorn Lodge B&B - Belturbet is a multi-award-winning, family-run business. A Level 3 Booking.com Travel Sustainable property and a Four-Star Failte Ireland Tourist Board Approved property.

Hawthorn Lodge overlooks the stunning Lough Arden and is surrounded by landscaped gardens and several ponds. We are located within the picturesque village of Milltown near Drumlane Abbey and Round Tower.

We grow on-site our own organic, fresh fruit, vegetables, and herbs to create our breakfast dishes and we are members of the Created in Cavan Food network. Thus, committed to promoting and using locally made produce. We cater for a wide range of dietary requirements and are committed to reducing and recycling food waste to make our own compost.

All our Family and Twin Rooms have private En-Suites. All rooms feature tea & coffee making facilities, flat screen TV, hairdryer, free complimentary Wi-Fi, toiletries, etc.



#### SLIEVE RUSSELL HOTEL, GOLF & COUNTRY CLUB

16



+353 (0)499526444

Slieve Russell Hotel, Golf & Country Club, this premier hotel, and resort complex prides itself on its opulent surroundings, congenial atmosphere, friendly staff, and superb cuisine. Set in 300 acres, including 50 acres of lakes, the resort offers a unique experience in relaxation and leisure.

The facilities include a top quality four-star hotel, with 224 stylish bedrooms, a world-class spa - Cúin Spa & Wellness Centre, excellent conference and banqueting facilities, along with a magnificent leisure centre.

Enhancing the facilities is the superb PGA National 18-hole championship golf course, a 9 hole par 3 course and a driving range.

Discover the pleasure of staying at the Slieve Russell Hotel.



#### JAMPA LING

19



+353 (0)499523448

Jampa Ling is a meditation and retreat centre situated on a beautiful nineteenth century estate in County Cavan, Ireland. We are extremely fortunate to have His Holiness the Dalai Lama as our patron for over 30 years.

Jampa Ling was established in 1990 under the spiritual direction of Venerable Panchen Ötrul Rinpoche, who is a full-time resident here. The Centre is located on nineteen acres of land which include a mature birch forest and views of the spectacular Cuilcagh Mountain.

The words 'Jampa' and 'Ling' together mean 'Place of Loving-Kindness', and Jampa Ling is indeed a place of blessing, open to everyone, of all faiths and none.

Aside from organised Buddhist teachings and meditation training, people come to Jampa Ling just to enjoy its peaceful ambience and beautiful natural surroundings - a perfect environment for meditation and relaxation.



#### INTO THE WILD

20



+353 (0)862116766

Into the Wild is a food trailer nestled in the foothills of Cuilcagh Mountain, surrounded by stunning natural beauty. Specialising in vegetarian, vegan, and gluten free food using seasonal, organic, homegrown produce from our garden (when available). Menus include soup, open sandwiches on local artisan sourdough bread, homemade cakes, and sweet treats. Serving organic, fair trade, single origin Brazilian coffee, hand roasted in County Sligo, as well as tea, a selection of herbal teas and cold beverages.

Into the Wild was established in 2021 with the aim of providing fresh, healthy, great tasting food. So, whether you are veggie, vegan, gluten free or just darn hungry, we have something for everyone.



#### CUILCAGH MOUNTAIN PARK

35



Cuilcagh Mountain Park takes in 2,500 hectares on the northern slopes of Cuilcagh Mountain. In the heart of the Geopark, Cuilcagh Mountain with its distinctive tabletop profile forms a natural focal point of an area rich in geology, archaeology, folklore, history, and wildlife. At 665 metres, the mountain summit is the highest point in both Fermanagh and Cavan.

As you steadily climb the Cuilcagh Boardwalk Trail, you meander and weave your way through a rugged boulder landscape to eventually reach the viewing platform. The viewing platform positioned precariously at the edge of the mountain plateau offers breath taking views over the surrounding landscape and an opportunity to take a well-deserved rest before starting your descent.

To get here, search 'Cuilcagh Boardwalk Trail'.

## Contact Information

Cuilcagh Lakelands Geopark,  
MacNea Resource Centre,  
Blacklion,  
Co Cavan,  
Ireland,  
F91 NWV7

T: +353 (0) 719 853 692  
E: [info@cuilcaghlakelands.org](mailto:info@cuilcaghlakelands.org)

For more information on upcoming activities, latest news, additional Geopark sites and much more please visit:

[www.cuilcaghlakelands.org](http://www.cuilcaghlakelands.org)  
[www.cavanburrenpark.ie](http://www.cavanburrenpark.ie)  
[www.marblearchcaves.co.uk](http://www.marblearchcaves.co.uk)  
[www.thisiscavan.ie](http://www.thisiscavan.ie)  
[www.fermanaghlakelands.com](http://www.fermanaghlakelands.com)



@cuilcaghlakelands

