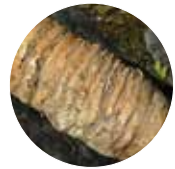


FOSSIL ACTIVITY BOOKLET



**CUILCAGH
LAKELANDS
GEOPARK**

www.cuilcaghlakelands.org



Did you know that limestone is the main rock type in the Geopark? It was formed from a mixture of the lime mud creatures that lived there.

The fossils contained in these limestone rocks are the preserved remains of the animals that lived in this tropical sea. Fossils have been discovered all over the Geopark. They are all around us - you just have to look closely to find them!

Use the information in the centre of the leaflet to help you answer the questions.

FOSSIL QUIZ

1. were once living animals, their hard remains have been preserved in the rock for millions of years.
2. Goniatites are relatives of the modern day squid and .
3. Bryozoa lived in .
4. There are 2 types of coral; and .
5. Brachiopods were dwelling creatures that were commonly found 340 million years ago.
6. Most of the fossilised animals found in rocks in the Geopark would have lived in conditions.
7. Crinoids use their many arms to filter small particles of from the water.

See if you can **match** the **description** of the species to the **correct picture**.

BRACHIOPOD



COLONIAL CORAL



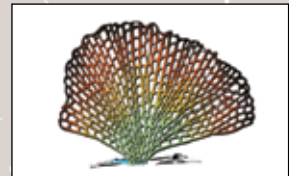
SOLITARY CORAL



CRINOID



BRYOZOA



GONIATITES



DRAW A LINE TO MATCH THEM UP.

A very distant relative of the **branching corals** and brain corals found in areas such as the Great Barrier Reef in Australia; they enjoyed warm, shallow water with lots of sunlight and were found 340 million years ago.

A type of **shell-dwelling** creature that were very common 340 million years ago. They were often found in reefs, which simply mean they were found in large numbers in the same area.

This species looked like a plant but, was actually an animal. They were anchored to the sea floor and used their many arms to filter food from the water in which they lived. They were also known as sea lillies.

The coiled shell was made up of small compartments filled with air which, when forcefully released, propelled the animal backwards through the water. They are **relatives of the octopus and squid** that we find in our oceans today.

Shaped just like an animal's horn, they consisted of just one animal and preferred slightly deeper water conditions in comparison to similar species.

A **colony of small animals** that look like one single larger animal; they were only found in the sea and lived in quiet waters, as their delicate structure was easily damaged.

8. ☐ ☐ ☐ ☐ ☐ ☐ ☐ ☐ are also known as sea lillies.

9. Goniatites swam ☐ ☐ ☐ ☐ ☐ ☐ ☐ ☐ through the water by shooting out jets of air which propelled them through the water.

Now write the letters from the shaded boxes in the grid below to find out what they spell:

☐ ☐ ☐ ☐ ☐ ☐ ☐
☐ ☐ ☐ ☐

Help Dawn to unscramble the letters to spell words associated with fossils

1. SISLOF ☐ ☐ ☐ ☐ ☐ ☐

2. RALOC ☐ ☐ ☐ ☐ ☐

3. ASE ILSIEL ☐ ☐ ☐ ☐ ☐ ☐ ☐ ☐

4. KORSC ☐ ☐ ☐ ☐ ☐

5. LEHSLS ☐ ☐ ☐ ☐ ☐ ☐

6. DRONICI ☐ ☐ ☐ ☐ ☐ ☐ ☐



Below are 12 words that are associated with Cuilcagh Lakelands UNESCO Global Geopark and its fossils.

How many can you find?

BRACHIOPOD
BRYOZOA
COLONIAL
CORAL
CRINOID
FOSSIL
GEOPARK
GONIATITE
LIMESTONE
MARINE
STALACTITE
ROCK

M	O	X	T	R	I	J	K	B	R	K	C	O	R
J	B	R	A	C	H	I	O	P	O	D	D	V	G
U	J	D	F	B	I	T	J	D	F	Q	M	L	I
W	F	P	O	L	T	S	J	C	A	H	A	C	E
W	R	D	C	H	J	S	B	O	M	F	R	L	T
P	F	B	R	I	U	C	Z	O	U	K	I	H	I
A	R	F	L	A	R	O	C	B	A	M	N	E	T
F	A	R	F	D	Y	Z	K	Y	S	A	E	M	C
O	E	F	S	R	I	L	S	D	G	E	R	I	A
S	N	I	B	O	D	F	I	Z	D	B	T	N	L
S	O	K	D	G	M	N	O	M	U	L	O	I	A
I	T	U	P	K	R	A	P	O	E	G	U	S	T
L	S	O	I	L	O	S	C	F	D	S	C	K	S
Q	E	T	I	T	A	I	N	O	G	N	T	I	W
M	M	A	P	H	J	T	H	I	K	W	E	O	A
F	I	R	S	D	I	O	N	I	R	C	C	S	N
O	L	G	R	B	E	A	T	D	L	O	C	N	T
G	E	O	G	D	R	E	A	J	C	B	Y	D	M
N	J	O	D	L	A	I	N	O	L	O	C	C	L
B	M	A	S	G	H	I	O	N	D	C	O	L	O

To find out more about Cuilcagh Lakelands UNESCO Global Geopark, Education and Fieldwork opportunities or Activities please contact:

Contact Information

Cuilcagh Lakelands UNESCO Global Geopark
MacNean Resource Centre
Blacklion
Co Cavan
Ireland
F91 NWV7

+353 (0)71 9853692
info@cuilcaghlakelands.org

This project has been funded through the European Union's INTERREG IVA Programme and managed by the Special EU Programmes Body.



CUILCAGH
LAKELANDS
GEOPARK



Comhairle Contae
an Chabháin
Cavan
County Council



Fermanagh & Omagh
District Council
Comhairle Ceantair
Fhear Manach agus na hOmaí